

To International Students Who Came to Japan for the First Time in April : Tips for Life in TUT, ver. 1.1

2024/04

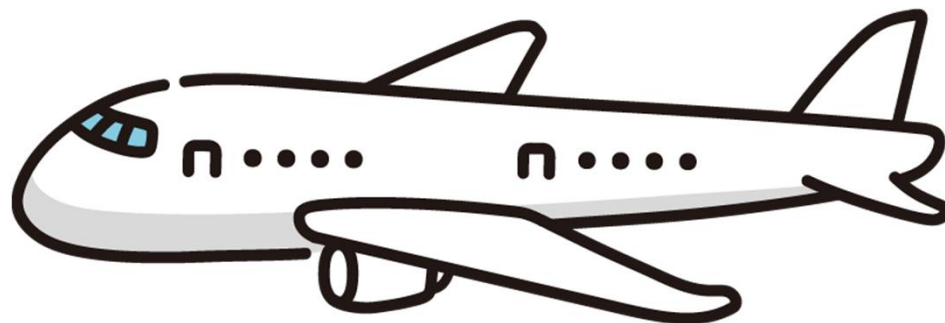


Toyohashi University of Technology
Student Support Center

Introduction: Subject and Purpose of this Handout

- This handout is intended for international students who are new to Japan.
- This handout is intended to supplement the two guides distributed to you. Please read them carefully first.
 - ✓ “Guidebook for International Students”
<https://student.office.tut.ac.jp/international/guidebook-for-international-students.html>
 - ✓ “International Student Guide” (distributed at the International Student Guidance)

0. Studying Abroad



New Challenges

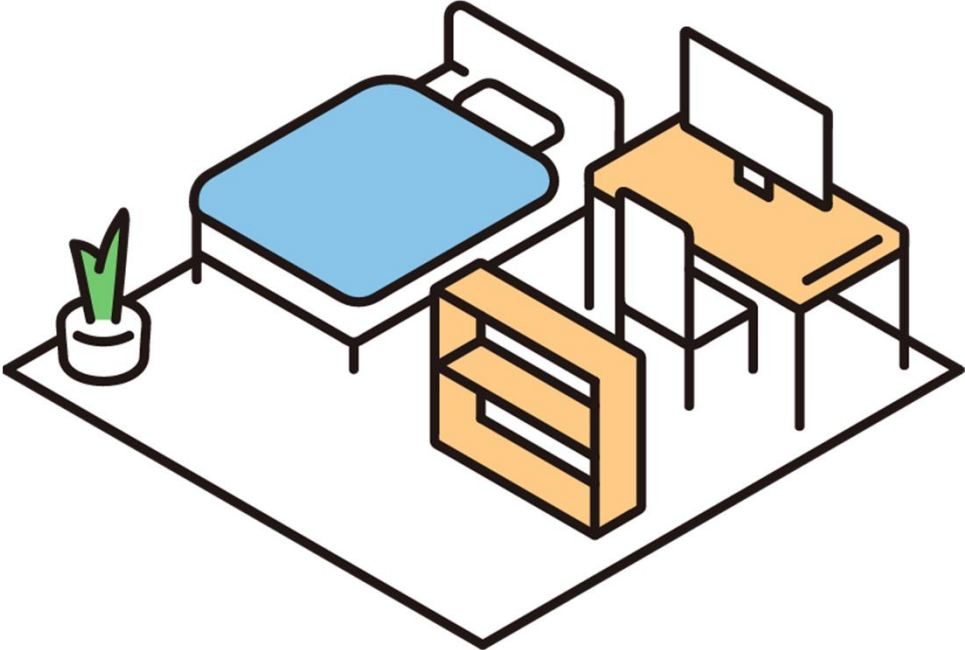
- Your courage to study in a different country is very impressive.
- Studying abroad is **an opportunity for you to grow and develop**.
- You will not only learn about your field of study, but you will also gain a lot by living in a different culture, Japan (TUT).



To make your experience meaningful

- In reality, however, living in an unfamiliar environment can be very difficult.
- There will be many things that will be confusing, such as meals, shopping, and paperwork.
- There are things that you may not understand or be able to do on your own. In such cases, **it is important to ask someone for help.** It is an important ability to be able to rely on others in a moderate way.

1. Daily Life

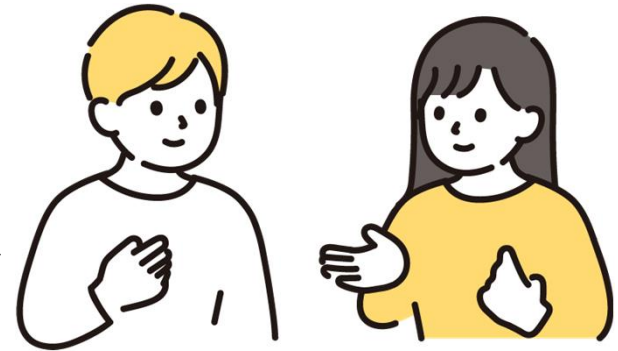


Japanese

- There are still very few English speakers in Japan. If you can speak Japanese, your life in Japan will be more convenient.
- If you do not understand Japanese, classes will be tough.

- **Study Japanese.**

- Take Japanese language courses at the university and learn well.



- Make use of the Japanese Language Advisor Service
✓ https://las.tut.ac.jp/html_en/support/j-advisor.html

Money

- Apply for Scholarships

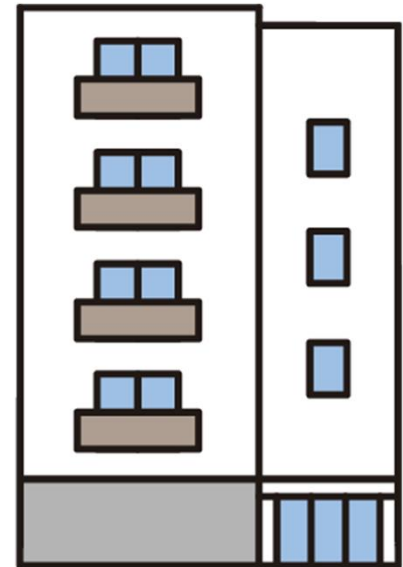
- ✓ <https://student.office.tut.ac.jp/international/scholarship.html>

- If you want to get a part-time job

- How to find a part-time job: ask friends for introductions, search on the Internet, etc.
- Note 1: Depending on your scholarship, you may not be able to work part-time. Also, you can only work up to 28 hours per week with a student visa.
- Note 2: If you work part time until late at night, you may not be able to get up in the morning and attend classes.

Apartment / Dormitory

- Japanese people do not like loud noises. Try **not to bother the people living next door.**
- If you want to make noise, choose the right place.
- **Be sure to pay your monthly rent.** The university will be contacted if you fail to pay in full.

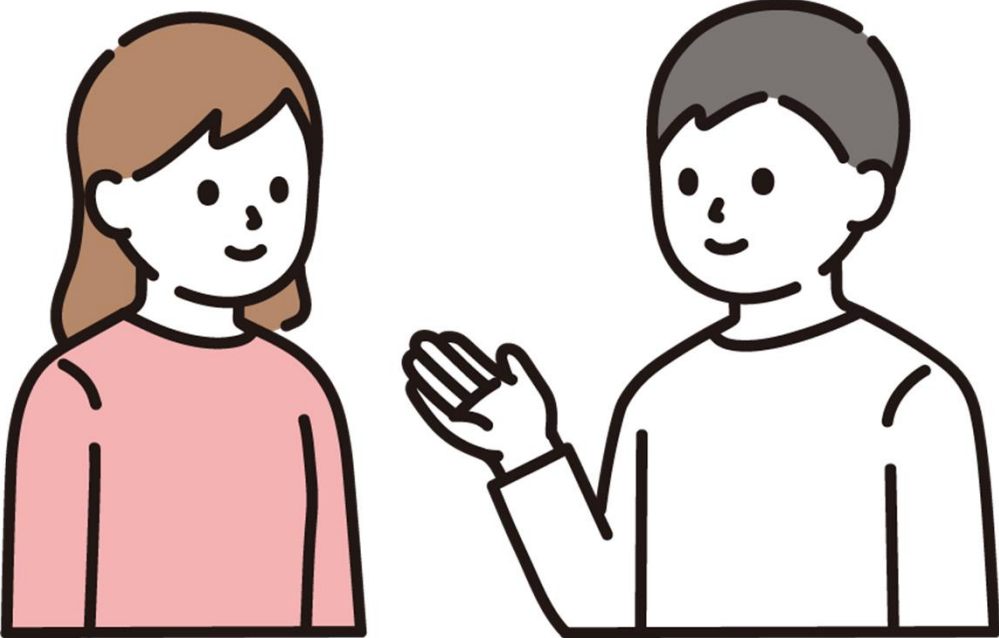


Refresh

- Learn to cope with stress in your own way.
 - Watch a movie
 - Play games
 - Go out with friends
 - Play sports
 - Sleep a lot etc.
- Some people feel more energetic after they talk (or text) with family and friends in their home country.

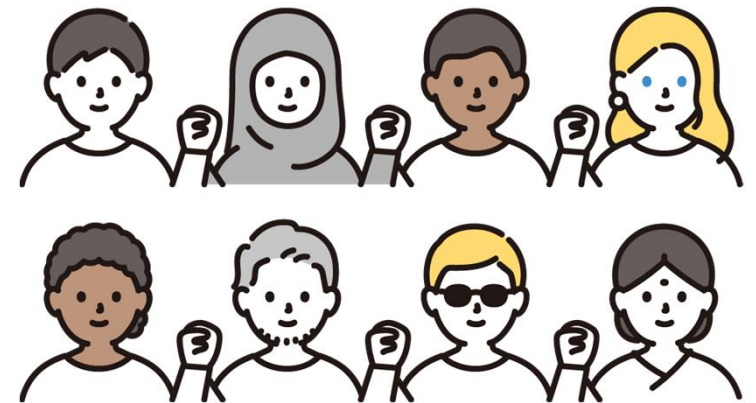


2. Friendships



Making Friends

- Making friends is a very important part of TUT life!
- If you have friends,
 - You can exchange information about the university and your life.
 - You can hang out together.
 - You can help each other.
- Let's make friends with people from the same country or from different countries.



Making Friends

- Get to know each other in class.
- Join clubs. It's a great way to make friends.
- ✓ <https://www.tut.ac.jp/english/student/studentlife/campuslife.html>
 - Clubs in which many international students participate
 - International Exchange Club (CALL) • International Students' Sports Club etc.
- Participate in events and activities.
 - Global Lounge <http://www.toyohashi-tia.or.jp/en/tia-en-2023glounge.html?20231117>
 - Toyohashi Festival
 - TUT Festival, etc.

3. University



Mail-Check, Note-taking

- The most common way to contact each other in TUT is by email. **Check your incoming email at least once a day.**
- **Make it a habit to take notes** so you don't forget. (It doesn't matter if it's on your smartphone or in a notebook.)
- In class, actively record your notes. You can review them later.



Supporter, Faculty, and Staff



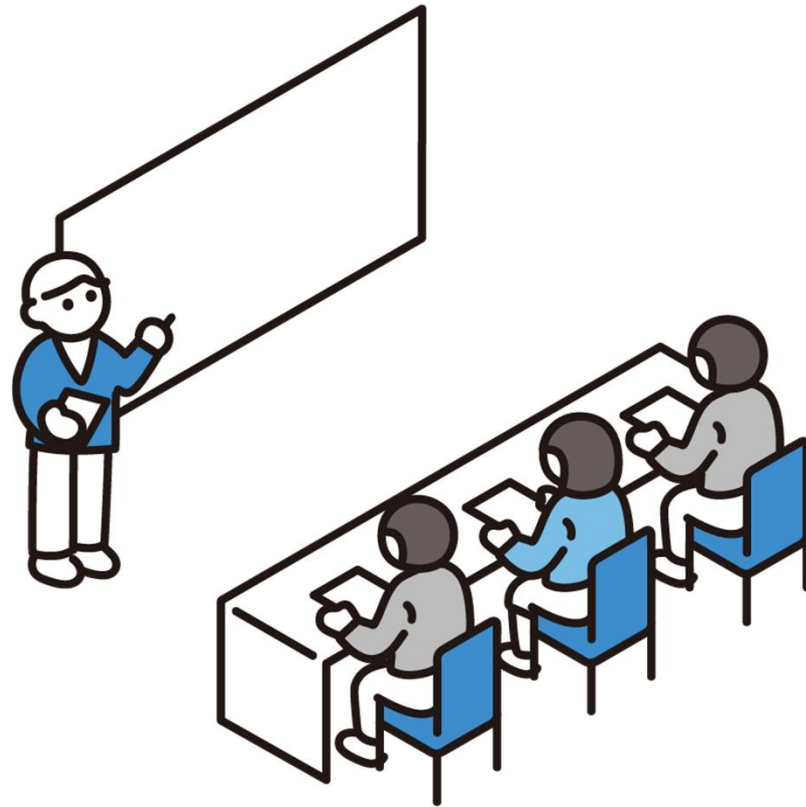
- Ask your supporter to help you learn about daily life.
- Faculty and staff are also available to assist you. **First, learn the name of your homeroom teacher or supervisor.** He / She can support you with your studies and daily life.
- If you receive an e-mail or phone call from a faculty member or staff member, **be sure to respond.**

Student Support Center

- **Student Support Center** is an organization within the university that provides support for student issues.
- ✓ <https://ssc.tut.ac.jp/en/>
- Come to us whenever you need supports.
- We can refer you to the appropriate organization or agency for your concerns.

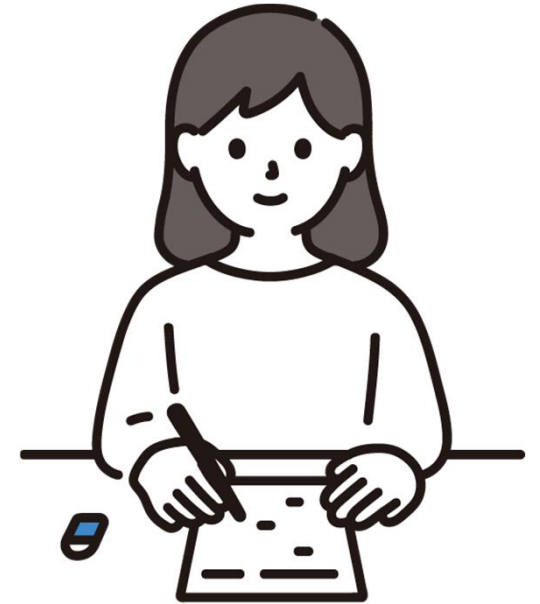


4. Higher Education and Job Hunting



Higher Education

- Your undergraduate years will fly by.
- It's good to think about what you will do after graduation.
- Many students go on to graduate school.
- If you wish to go on to higher education, **you will need to save money.**



If you want to work in Japan

- First and foremost, **Japanese language proficiency is required**; aim to obtain N1.
- The job hunting process in Japan is very unique. It is important to **understand the job-hunting schedule**.
- ✓ Register with GoogleClassroom "TUT Career Support Desk for International Students" (Class Code: vfz44vf)
- It is also possible to return to your home country and seek employment in Japan.

JOB HUNTING INFORMATION

IF YOU WANT TO GET A JOB IN JAPAN,

JOIN : TUT CAREER SUPPORT DESK FOR INTERNATIONAL STUDENTS

TUT International students who want to get a job in Japan should first join the Google Classroom: TUT Career support desk for international students. This Classroom contains information about job hunting that TUT has received. You can also get basic knowledge about finding a job in Japan.

Class Code
vfz44vf

CONTACT INFORMATION
Student Support Center