

2023/6/28~7/12

Results of survey for international students

2023/09/26

Student Support Center

Table of Contents

- **Part 1** Attributes of the students who answered
- **Part 2** Confidence in Japanese and English
- **Part 3** Interpersonal relationships



Part 1

Attributes of the students who answered

Basic Attributes (1)

- Number of answers

- 121 、 Recovery rate =50.8%

(The number of enrolled international students as of June 2023 is 238)

- Answer Language

- English =104 (86.0%) 、 Japanese =17 (14.0%)

- Status

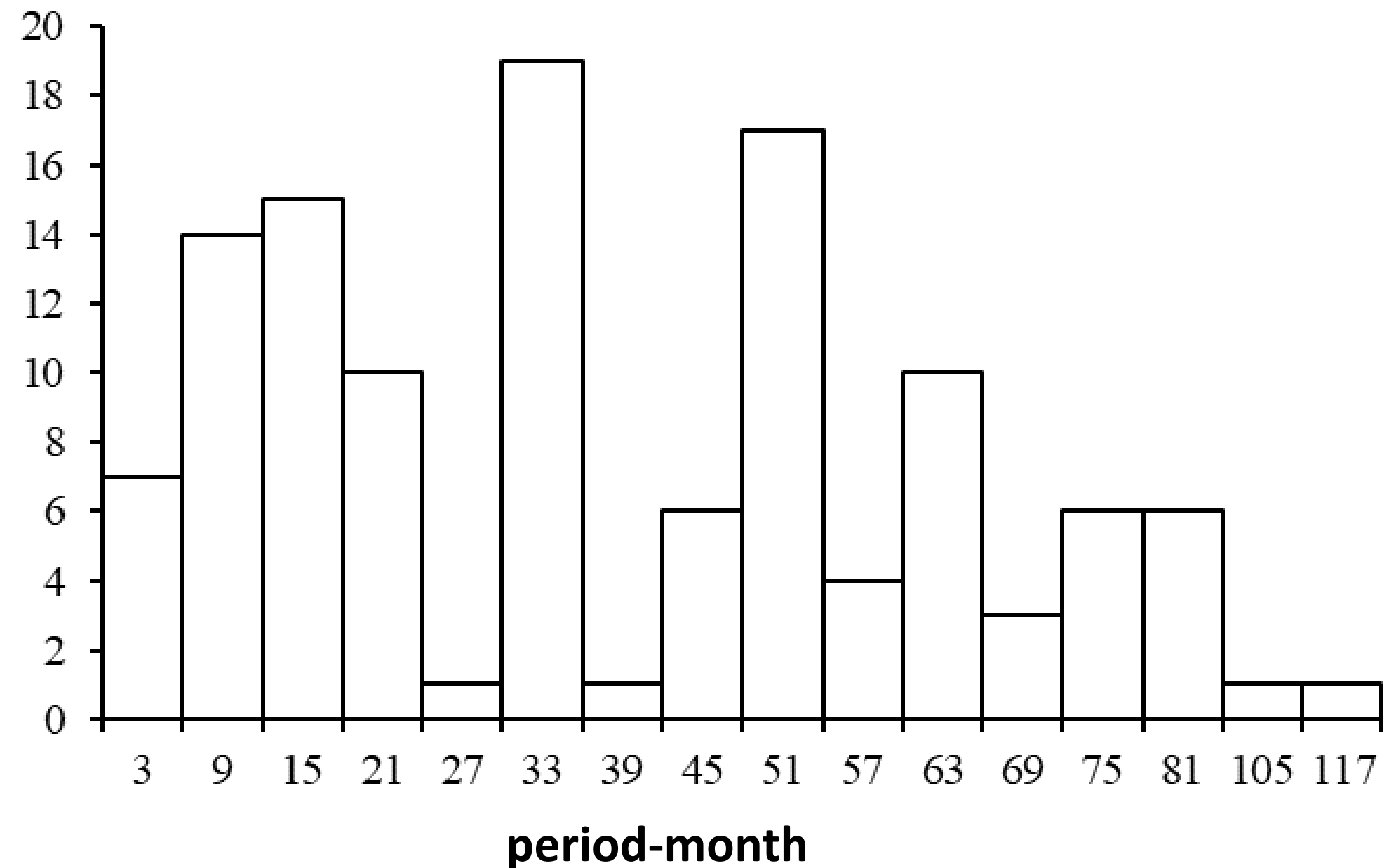
- Undergraduate =50 (41.3%) 、 Master's student=43 (35.5%) 、
Doctoral student=24 (19.8%) 、 Research student, other=4 (3.3%)

- Admission Period

- April =81 (66.9%) 、 October =40 (33.1%)

Basic Attributes (2) : Period from after first arrival in Japan to present

- Period from the first time you came to Japan for the purpose of study or research to the present
 - Average = 38.3 months



Basic Attributes (3)

- Region (Percentage of all respondents in parentheses)
 - Asia =99 (81.8%)、 North America =0 (0%)、 Central and South America =4 (3.3%)、 Oceania =0 (0%) 、 Europe =6(5.0%)、 Middle East =2 (1.7%)、 Africa =5 (4.1%)、 Unknown =5 (4.1%)
- Sex
 - Male =87 (71.9%) 、 Female =30 (24.8%) 、 Others =1 (0.8%) 、 Blank = 3 (2.5%)
- Residential Style
 - Alone =110 (90.9%) 、 Living with family =8 (6.6%) 、 Others=2 (1.7%) 、 Blank =1 (0.8%)



Part 2

Confidence in Japanese and English

Confidence in Japanese ability

- Japanese ability
 - Japanese speaking ability (1 = not at all confident 4 = very confident)
 - Japanese reading ability (1 = not at all confident 4 = very confident)

variable	Japanese reading ability				total
	1	2	3	4	
Japanese speaking ability	1	16	1	0	17
	2	13	13	11	38
	3	2	4	32	46
	4	0	0	7	20
total	31	18	50	22	121

Confidence in English ability

- English ability
 - English speaking ability (1 = not at all confident 4 = very confident)
 - English reading ability (1 = not at all confident 4 = very confident)

variable	English reading ability				合計
	1	2	3	4	
English speaking ability	1	0	3	0	3
	2	1	2	7	10
	3	0	0	18	21
	4	0	0	2	67
合計	1	5	27	88	121



Part 3

Interpersonal Relationships

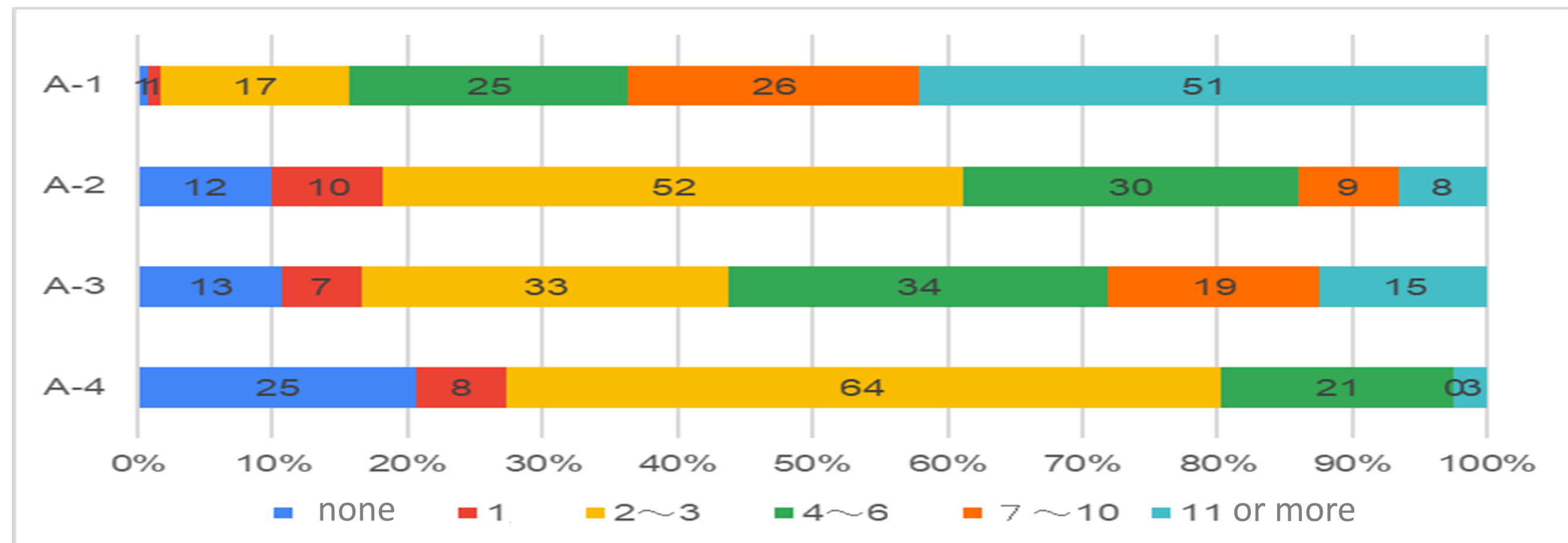
international student friends

A-1 How many "international student" friends do you have on campus?

A-2 Among your international student friends on campus, How many friends do you have with whom you exchange information about classes or jobhunting?

A-3 Among your international student friends on campus, how many friends do you hang out (play) with?

A-4 Among your international student friends on campus, how many friends do you have with whom you can talk about your troubles ?



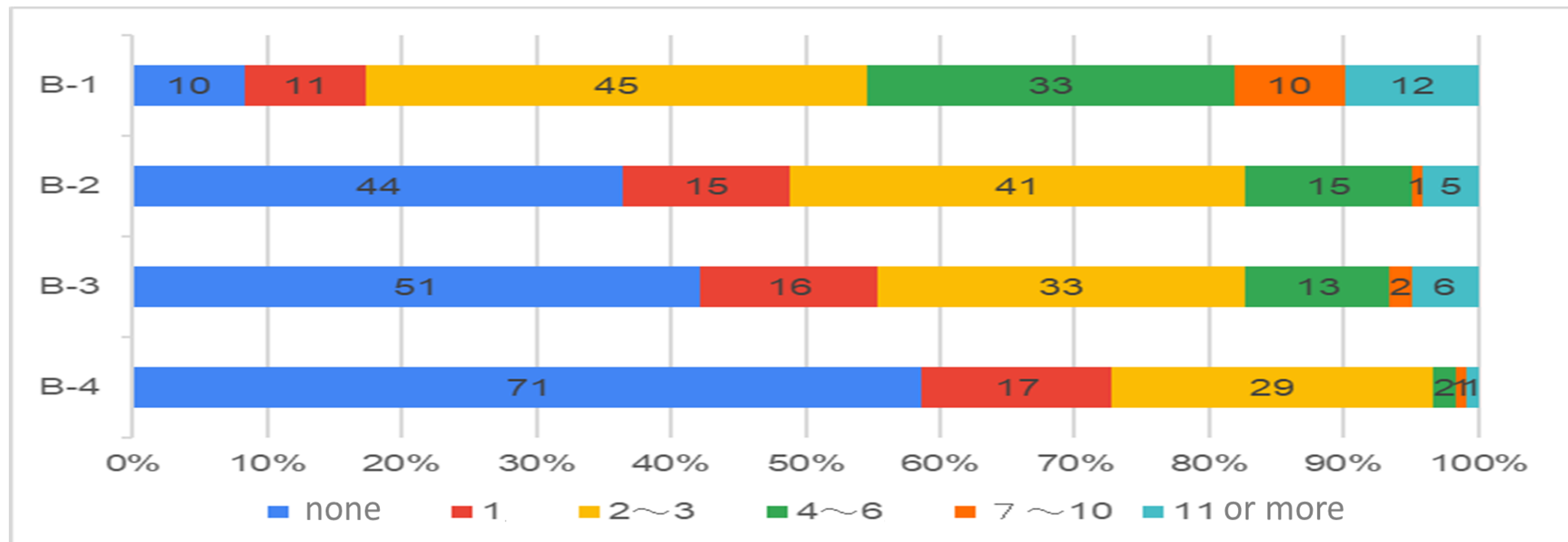
Japanese Friends

B-1 How many "Japanese" friends do you have on campus?

B-2 Among your Japanese student friends on campus, how many friends do you have with whom you exchange information about classes or jobhunting?

B-3 Among your Japanese student friends on campus, how many friends do you hang out (play) with?

B-4 Among your Japanese student friends on campus, how many friends do you have with whom you can talk about your troubles ?



Consultation with Faculty and Staff

C-1 How many faculty and staff on campus do you have access to when you need help?

C-2 We ask this question to those who filled in one or more persons above. Did you include your supervisor (class teacher) in them?

